

Two new species of ergasilid copepods parasitic on fishes cultured in brackish water in Taiwan

Ching-Long Lin and Ju-shey Ho

(C-LL) Department of Aquaculture, National Chiayi Institute of Technology, Chiayi, Taiwan, 60083;

(J-SH) Department of Biological Sciences, California State University, Long Beach, California, 90840-3702, U.S.A.

Abstract.—*Ergasilus lobus* and *Diergasilus kasaharai* are described based on the specimens obtained from the gill filaments of the moribund fishes cultured in brackish water in southern part of Taiwan. The former species was obtained from Malabar reef-cod (*Epinephelus malabaricus*) and the latter, from milkfish (*Chanos chanos*) and Borneo mullet (*Liza macrolepis*). A key to the 22 species of *Ergasilus* occurring on the coastal, brackish water fishes of the world is provided.

Copepods of the family Ergasilidae are generally known as parasites of freshwater fishes throughout the world. Nevertheless, some of them are found on estuarine and/coastal fishes. According to Ho (1991), in the course of copepod evolution, poecilostome copepods represented by the Ergasilidae succeeded only once in invading freshwaters, and those ergasilids occurring on coastal, brackish water fishes are a group of poecilostomes secondarily adapted for marine existence.

Several species of ergasilids are known to cause disease in finfish cultured in brackish waters (Nigrelli 1950, Nakajima & Egusa 1973, Paperna 1975, Wijeyaratne & Gunawardene 1988, Leong & Wong 1988, Hogans 1989). In this paper, two species of ergasilids are reported from the fishes cultured in brackish water in the southern part of Taiwan, a species of *Ergasilus* and a species of *Diergasilus*.

On 2 October 1992, a moribund Malabar reef-cod (*Epinephelus malabaricus*) was brought to the Laboratory of Fish Disease at the Chiayi Institute of Technology for examination. The fish came from a culture pond located in Chi-ku Village of Tainan County. A close examination showed that

its gill filaments were infected with *Ergasilus* sp. (Fig. 1A) or contained many "vacuoles" (Fig. 1B). Since no other abnormalities were detected, the death of the fish was suspected to be caused by the infection of the ergasilid copepod. Later, on 23 June 1993, a mass mortality occurred in another culture pond in the same village where about 9000 juvenile Malabar reef-cods (imported from Thailand) were cultured. For 15 days, about three to four hundred dead fish were removed daily from the pond. Examination of the dead fish revealed the same condition, carrying *Ergasilus* sp. and with many "vacuoles" in the gill filaments, as observed in October 1992 from another pond. A subsequent histological examination of the "vacuoles" in the gill filaments showed no trace of microbes or protozoan parasites; "vacuoles" may have formed by the host's reaction to the hooking and/or penetration of the ergasilid's antenna.

On 23 December 1993, a mass mortality occurred in a culture pond in Chi-ku Village where about 20,000 milkfish (*Chanos chanos*) were cultured. In the beginning, about 10 fish died daily, but after a week more than 100 fish died in a day. Examination of the moribund fishes revealed that

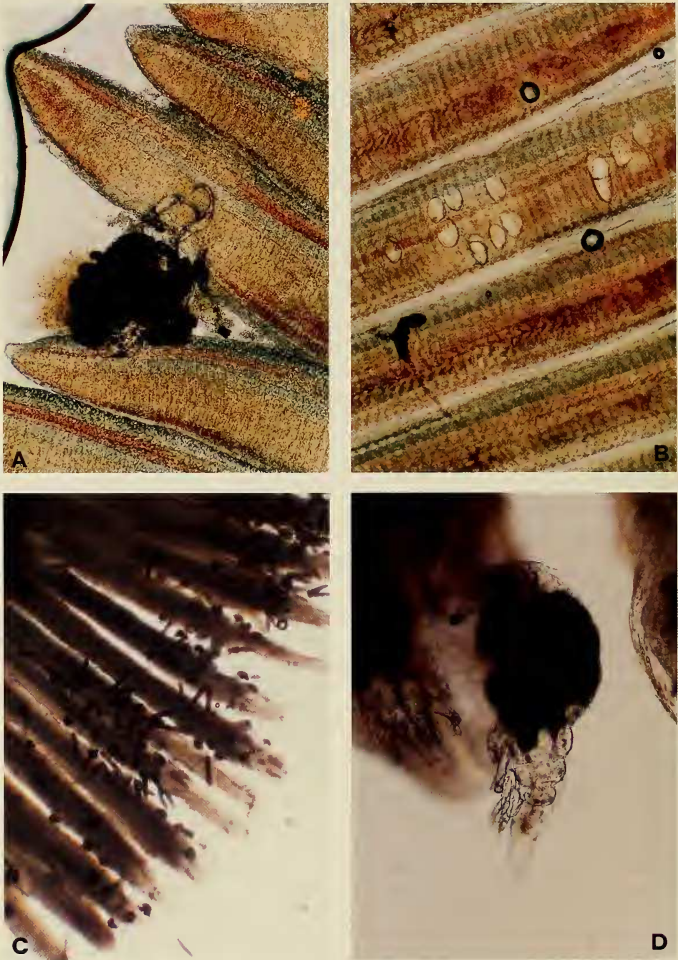


Fig. 1. Gill filaments of diseased fishes. A. from *Epinephelus malabaricus* showing attachment of *Ergasilus lobus*; B. from *E. malabaricus* showing the "vacuoles"; C. from *Liza macrolepis* showing a heavy infestation with *Diergasilus kasaharai*; D. from *L. macrolepis* showing attachment of *D. kasaharai*.

death was caused by the parasitism of a species of ergasilid copepod belonging to *Diergasilus*. More than 130 copepods could be removed from the gill filaments of an infected fish. In October 1994, the same parasite was found on Borneo mullet (*Liza macrolepis*) cultured together with tilapia (*Oreochromis* sp.) in a pond in Hu-Nei Village in Kaoshiung County. Two to three hundred mullets per day died for about a week. The moribund mullets, swimming at the edge of the pond, were found to carry between 500 to 1000 copepods on their gill filaments (see Fig. 1C); these filaments showed inflammation, necrosis and were coated with excessive amount of mucus. Undoubtedly, the death of the mullets were due to the heavy parasitism of *Diergasilus* sp. (Fig. 1D).

About 160 species of poecilostome copepods are currently classified in 26 genera of the family Ergasilidae (Malta 1993, 1994; Amado et al. 1995). Of these 26 ergasilid genera, *Ergasilus* is the largest with about three-quarters of the known ergasilid species. Identification of the species of *Ergasilus* has been a problem for many biologists who are not familiar with this group of parasitic copepods.

In as much as the culture of marine finfish in the coastal area in brackish water is becoming more and more popular in many parts of the world, identification of those potential fish disease causing ergasilids is becoming more and more indispensable. In addition to describing the above-mentioned species of *Ergasilus* and *Diergasilus* a key to the species of *Ergasilus* which may occur on coastal, brackish water fishes is also provided as a quick identification method for these pathogens.

Materials and Methods

Moribund fishes obtained from fishermen were examined under the dissection microscope for abnormalities and the presence of parasites. Upon the discovery of parasitic copepods, photographs were taken with the

parasites in situ, after which the parasites were removed from the host and preserved in 70% ethyl alcohol. Microscopical examination of the ergasilid copepods was based on specimens fixed and preserved in ethyl alcohol and which were cleared in 85% lactic acid for a couple of hours before taking measurements and making dissections. All drawings were made with the aid of a camera lucida. All measurements were taken from the longest, widest and deepest parts of the body and are given in mm unless mentioned otherwise.

Descriptions

Ergasilus lobus, new species (Figs. 2–3)

Material examined.—10 ovigerous females recovered from gill filaments of a moribund Malabar reef-cod, *Epinephelus malabaricus* (Bloch et Schneider), cultured in Chi-ku Village in Tainan County in Taiwan on 23 Jun 1993. Holotype (USNM 278225) and 2 paratypes (USNM 278226) have been deposited in the Division of Crustacea, National Museum of Natural History, Smithsonian Institution, Washington, D.C.

Female.—Body 0.55 (0.53–0.57) long and 0.30 (0.27–0.32) wide, with greatly inflated cephalothorax (including first pediger) and relatively short and small metasome and urosome (Fig. 2A, B). Genital double somite distinctly wider than long (Fig. 2C) and armed on ventral surface with a row of fine spinules across mid-region and another row on posterior margin. Spinules on other parts of urosome as shown in Fig. 2D. Caudal ramus (Fig. 2C, D) slightly longer than wide, tipped with 1 long and 3 short setae. Egg sac (Fig. 2A) distinctly longer than body, about 0.64 in length and 0.16 in width.

Antennule (Fig. 3A) 6-segmented, armature of 3, 12, 4, 4, 2 and 7 elements. Antenna (Fig. 3B) strongly curved, without sensilla or seta; 1st segment wider than long, second segment slightly longer than

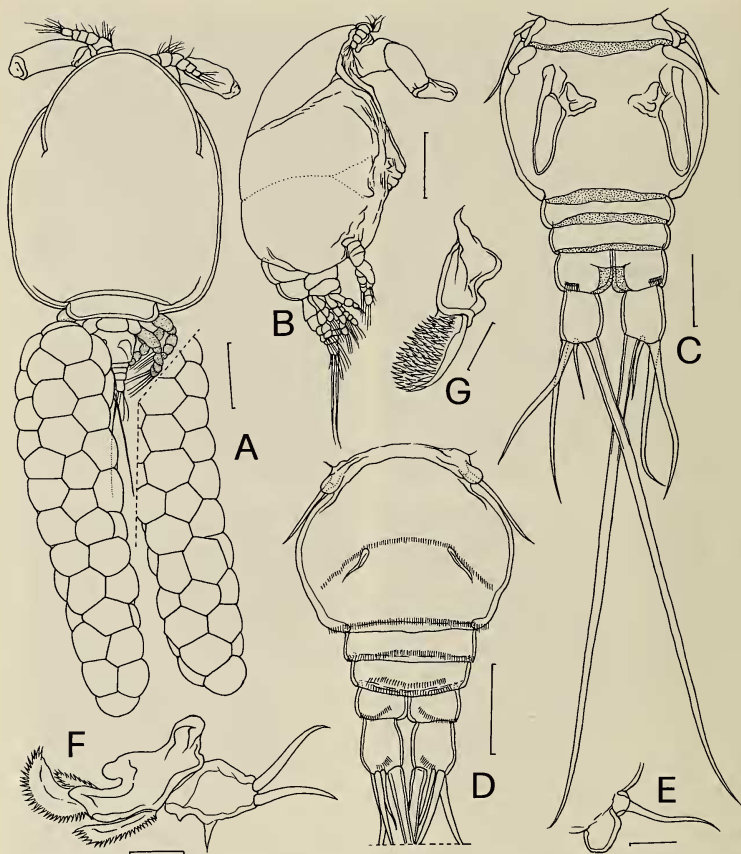


Fig. 2. *Ergasilus lobus*, new species, female: A. habitus, dorsal; B. habitus, lateral; C. urosome, ventral; E. leg 5; F. mandible and maxillule; G. maxilla. Scale bars: 0.1 mm in A, B; 0.03 mm in C, D; 0.01 mm in E, F, G.

third segment, and terminal claw distinctly shorter than third segment. Mandible (Fig. 2F) a serrated, falciform blade bearing a spinulose process on anterior margin and another unserrated process on posterior margin. Maxillule (Fig. 2F) with 2 long and 1 short setae. Maxilla 2-segmented; proxi-

mal segment large and unarmed, distal segment (Fig. 2G) small and spinulose. Legs 1-4 (Fig. 3C-E) biramous, with formula of spines and setae as follows:

PI Coxa 0-0 Basis 1-0 Exopod 1-0; 0-1; II, 1, 4
Endopod 0-1; 0-1; II, 4

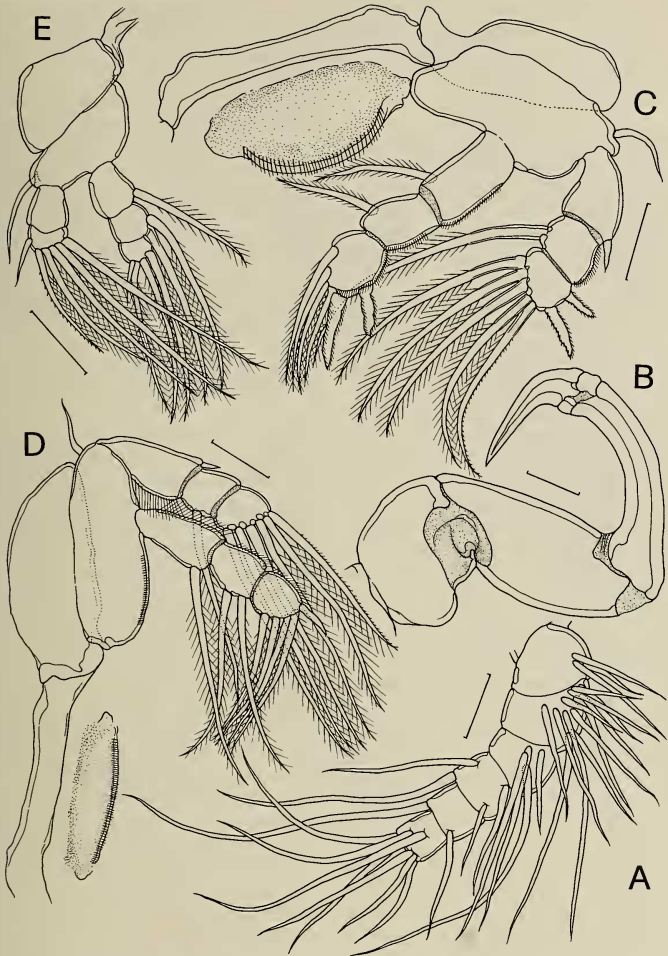


Fig. 3. *Ergasilus lobus*, new species, female: A. antennule; B. antenna; C. leg 1; D. legs 2 and 3; E. leg 4. Scale bars: 0.02 mm in A, C, D; 0.03 mm in B, E.

P2, P3	Coxa 0-0	Basis 1-0	Exopod	1-0; 0-1; 1, 5
			Endopod	0-1; 0-2; 1, 4
P4	Coxa 0-0	Basis 1-0	Exopod	0-0; 1, 1, 4
			Endopod	0-1; 0-2; 1, 3

Intercoxal bar with prominent posteroventral plate in leg 1 (Fig. 3C) less developed in legs 2 and 3 (Fig. 3D) and absent in leg 4. Leg 5 (Fig. 2C, D, E) much reduced, represented by a small knob tipped with a seta; a small protuberance located ventral to leg 5 (Figs. 2D, E).

Etymology.—The species name *lobus* in Latin means “a protuberance”. It is here used as a noun in apposition and refers to the small rounded projection located ventral to the extremely reduced leg 5.

Remarks.—Currently, about 120 species of *Ergasilus* are known. However, only ten of them are characterized by a greatly inflated cephalothorax which is more than twice the length of the rest of the body. These ten species are: *E. argulus* Cressey, 1970; *E. auritus* Markewitsch 1940; *E. centrachidarum* Wright, 1882; *E. luciopercum* Henderson, 1926; *E. manicatus* Wilson, 1911; *E. myctarotheres* Wilson, 1913; *E. orientalis* Yamaguti, 1939; *E. parvitergum* Ho, Jayarajan & Radhakrishnan, 1992; *E. plecoglossi* Yamaguti, 1939; and *E. rotundicarpus* Jones & Hine, 1983. The new species can be easily distinguished from these similar species, except for *E. argulus*, *E. myctarotheres*, and *E. parvitergum*, by the absence of an inflated, cuticular, outer membrane between the first and second segments of the antenna.

According to Cressey & Collette's (1970) description, *E. argulus* differs from the new species in having two setules on the inner margin of the second segment of the antenna, a 2-segmented endopod on leg 1, and seven elements on the terminal segment of the exopod on legs 2 and 3. Based on Wilson's (1913) description, *E. myctarotheres* is distinguishable from the new species by the fine structure of the antenna; its shaft bears a small, subterminal, inner protuberance

and the claw is armed with two small teeth on inner margin near the center; besides, the armatures on legs 1 to 4 also show differences.

The new species is most similar to *E. parvitergum* known from India (Ho et al. 1992). The similarities are seen not only in the general appearance of the body, but also in the reduction of the tergum of the fourth pediger and leg 5. Nevertheless, *E. parvitergum* can be distinguished from the new species in lacking a lobe on leg 5 and having an outer spine on the second exopod segment of leg 1 and the first exopod segment of leg 4.

Diergasilus kasaharai Do, 1981
(Figs. 4–6)

Material Examined.—Numerous ovigerous females and young females recovered from gill filaments of milkfish (*Chanos chanos*) cultured in Chiku Village in Tainan County, Taiwan on 23 Dec 1993 and Borneo mullets (*Liza macrolepis*) cultured in Hu-Nei Village in Kaoshiung County, Taiwan in Oct 1994. Two lots of specimens (USNM 278227 and 278228) have been deposited in the Division of Crustacea, National Museum of Natural History, Smithsonian Institution, Washington, D.C.

Female.—Body 0.59 (0.51–0.68) long, 0.30 (0.23–0.44) wide, and 0.27 (0.16–0.33) thick, with greatly inflated cephalothorax (Fig. 4A, B). Cephalothorax (including first pediger) distinctly wider than long and truncated anteriorly. Metasomal somites abruptly narrowed from cephalothorax and decreasing in size posteriorly (Fig. 4A). Genital double somite wider than long, bearing a hyaline lateral spine in egg-sac attachment area (Fig. 4C). Spinulation on ventral surface of urosome as shown in Fig. 4C. Caudal ramus (Fig. 4C) about as wide as long and tipped with 1 long and 3 short setae. Egg sac (Fig. 4A, B) shorter than body, 0.51 (0.45–0.62) long and 0.11 (0.11–0.13) wide (based on 20 individuals).

Antennule (Fig. 4D) 5-segmented, ar-

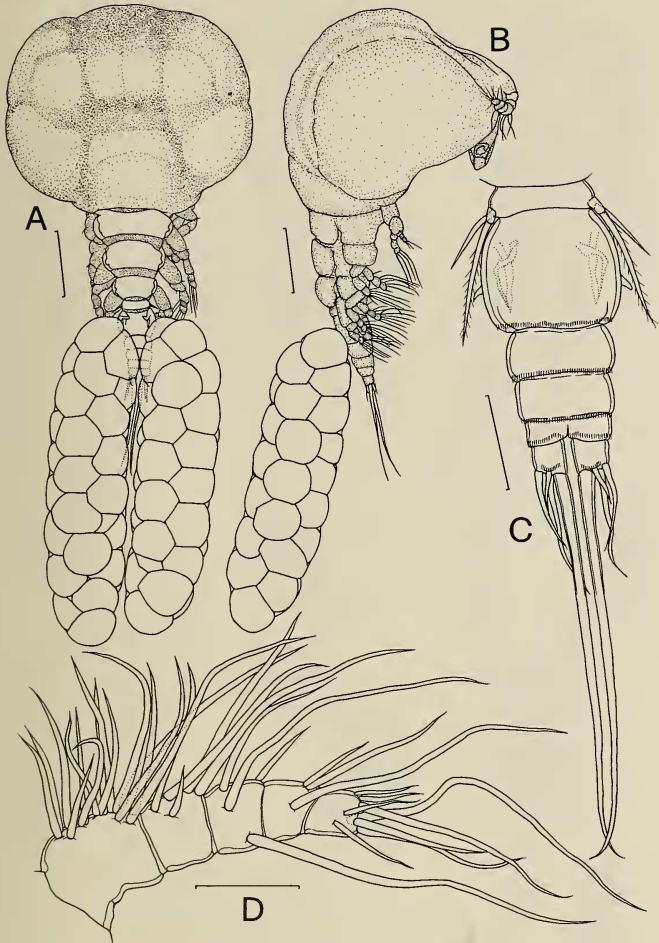


Fig. 4. *Diergasilus kasaharai*, female: A. habitus, dorsal; B. habitus, lateral; C. urosome, ventral; D. antennule. Scale bars: 0.1 mm in A, B; 0.04 mm in C; 0.03 mm in D.

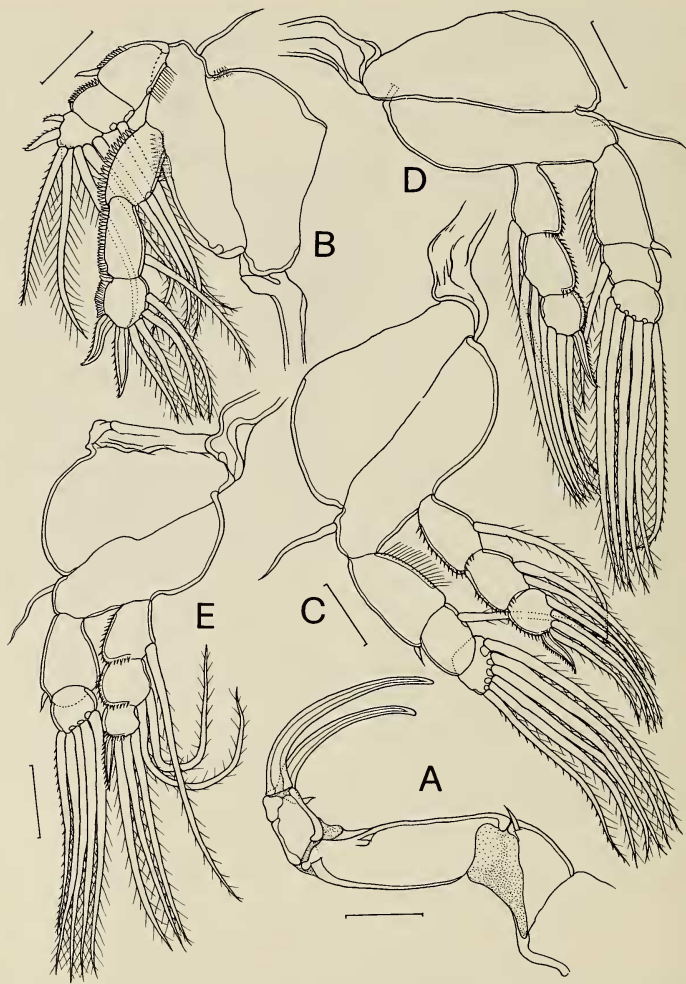


Fig. 5. *Diergasilus kasaharai*, female: A. antenna; B. leg 1; C. leg 2; D. leg 3; E. leg 4. Scale bars: 0.03 mm in A; 0.02 mm in B, C, D, E.

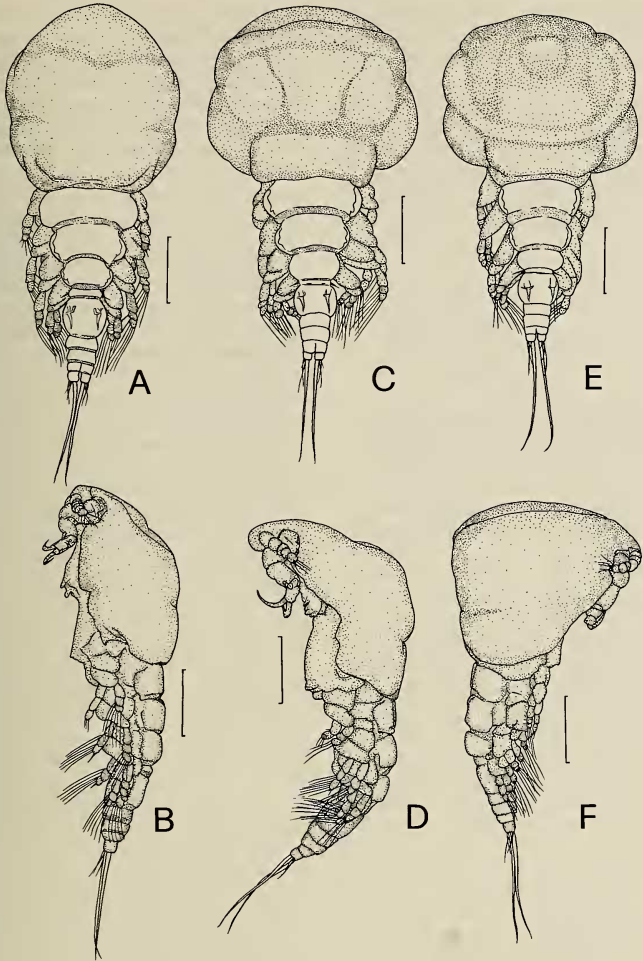


Fig. 6. *Diergasilus kasaharai*, habitus of females showing various state of inflation in cephalothorax: A. dorsal; B. same individual, lateral; C. dorsal; D. same individual, lateral; E. dorsal; F. same individual, lateral. Scale bars: 0.1 mm in all drawings.

mature of 15, 5, 4, 3 and 8 elements. Antenna (Fig. 5A) 3-segmented and tipped with 2 long, unequal claws; each segment bearing a small distal, inner seta; and second segment largest, longer than first and third segments combined. Mandible, maxillule, and maxilla as in the above species. Legs 1-4 (Fig. 5B-E) biramous, with formula of spines and setae as follows:

P1	Coxa 0-0	Basis 1-0	Exopod 1-0; 0-1; II, 1, 4
			Endopod 0-1; 0-1; II, 4
P2, P3	Coxa 0-0	Basis 1-0	Exopod 1-0; 0-1; 6
			Endopod 0-1; 0-2; I, 3
P4	Coxa 0-0	Basis 1-0	Exopod 1-0; 1, 4
			Endopod 0-1; 0-2; I, 3

Lateral margins of all endopods with a row of spinules, except for leg 1 with a row of teeth. First two exopodal segments of leg 1 with row of teeth on lateral margin. Leg 5 (Fig. 4C) much reduced, represented by a basal seta and a small papilla tipped with a long pinnate seta.

Remarks.—This is the second report of *Diergasilus kasaharai*. The first report was made by Do (1981) from the striped mullet (*Mugil cephalus*) caught in Kojima Bay, Okayama, Japan. The specimens from Taiwan bear close resemblance with those found in Japan in the structure of all appendages and differs from it only in the shape of the cephalothorax. In those specimens from Taiwan, the inflated cephalothorax is truncated at the front end (Fig. 4A, B), but in those from Japan, it is bluntly pointed as in a typical ergasilid copepod (Do 1981).

After a close examination of more than 100 individuals, it became clear that the shape and size of the cephalothorax of the specimens from Taiwan change as the parasite approaches the ovigerous state. It swells into a globose, lobular structure with a truncated anterior surface (Fig. 6A-C). And, even in the least inflated individuals (Fig. 6A, B), the cephalothorax is still distinguishable from those reported from Ja-

pan; it is not as pointed and globular as illustrated by Do (1981). However, with the lack of information about the maturity related changes in the cephalothorax of the Japanese specimens, we shall refrain from considering the above-mentioned differences as a species distinction between the specimens from Japan and Taiwan.

Key to *Ergasilus* Found on Coastal Fishes

There are more than 120 nominal species of *Ergasilus*. Most of them were either not well described by their discoverer, or have not been seen again since the original report. Further, their type specimens are either inaccessible or no longer extant. Consequently, it is difficult, if not impossible, to construct a key for quick identification of the members of this important genus of parasites. Fortunately, only about one-fifth of the members of *Ergasilus* are parasitic on the coastal, brackish water fishes and they are relatively better known; thus, attempt to construct a key to the species of *Ergasilus* in coastal waters is feasible.

Based on the reports of Wilson (1913), Brian (1927), Markewitsch (1933, 1940), Bere (1936), Yamaguti (1939), Redkar et al. (1952), Cressey & Collette (1970), Roubal (1981), Byrnes (1986), Kabata (1986, 1988, 1992), Leong & Wong (1988), Wijeyaratne & Gunawardene (1988), Ho et al. (1992), and the present work, 25 species of *Ergasilus* are currently known to occur on fishes of coastal, brackish waters. However, *Ergasilus ponticus* Markewitsch 1940 and *Ergasilus wilsoni* Markewitsch 1933 are excluded from the following key due to the lack of complete species information. Both of them were poorly described originally and have not been adequately redescribed.

Ergasilus funduli Krøyer 1863 was once considered to be a junior synonym of *Ergasilus manicatus* Wilson 1911 (Roberts 1970, Margolis & Arthur 1979). However, according to Kabata's (1986) re-examination of the type specimens (deposited in the Zoological Museum, University of Copen-

hagen), the structure of the antenna of *E. funduli* clearly indicated that it is a different species. Nevertheless, details of the leg armature of *E. funduli* are still unknown, and it is not included in the following key.

While many of the 22 species appearing in the following key are known from a single location, some of them are widely distributed, for instance, *Ergasilus orientalis* Yamaguti has been reported from Japan (Yamaguti 1939), Australia and Brazil (Cressey & Collette 1970) and *Ergasilus lizae* Krøyer is known from the Gulf of Mexico (Bere 1936), Pacific coast of North America (Hanan 1976, Kabata 1988), Australia (Kabata 1992), and the Mediterranean Sea (Ben Hassine 1983, Ben Hassine & Raibaut 1981). When a key is available for general use, more of these coastal *Ergasilus* species will show a pattern of much wider distribution than it is known now.

Appendages of small, difficult to dissect species of *Ergasilus* reported in the early part of this century were not well described; these appendages are the key characteristics to the species identification. In some cases, like Fraser's (1920) description on *Ergasilus turgidus*, there are discrepancies on the armature of appendages between the text and the illustrations. Thus, in construction of the following key, the characteristics of less ambiguity were employed and, in the case of conflict between the text and the illustration, the feature appeared in the illustration was adopted.

An interesting feature about the Ergasilidae is that only the adult female is parasitic. As in a typical free-living copepod, all members of this family pass through their naupliar and copepodid stages in a free-living mode of life; after molting into the adult and mating, the male dies and only the female seeks fish host to enter into a parasitic mode of life. Thus, the following key is intended only for the adult female.

- 1a. Cephalothorax greatly inflated, at least twice longer than remaining body length (metasome + urosome) 2

- b. Cephalothorax may or may not be inflated, if inflated less than twice length of remaining body (metasome + urosome) 8
- 2a. Antenna with an inflated membrane between first and second segment. 3
 - b. Antenna without such membrane 6
- 3a. Antenna with a balloon-like cuticular inflation at base of third segment of antenna *manicatus* Wilson, 1911
 - b. Antenna without such inflation 4
- 4a. Claw and shaft (third segment) of antenna with protuberance on inner margin *auritus* Markevich, 1940
 - b. Claw and shaft of antenna without such protuberance 5
- 5a. Cephalothorax twice longer than wide; ventral surface of caudal ramus with two rows of minute spines *orientalis* Yamaguti, 1939
 - b. Cephalothorax about 1.5 times longer than wide; ventral surface of caudal ramus without spinules *rotundicarpus* Jones & Hine, 1983
- 6a. Second segment of leg 1 exopod and first segment of leg 4 exopod with outer spine 7
 - b. Same segment on same leg ramus without outer spine . . . *lobus*, new species
- 7a. Terminal segment of endopod on legs 2 and 3 with six setae *myctarothos* Wilson, 1913
 - b. Same segment on same leg rami with one spine and four setae *parvitergum* Ho, Jayarajan, & Radhakrishnan 1992
- 8a. Middle segment of leg 2 endopod with one inner seta 9
 - b. Middle segment of leg 2 endopod with two inner setae 12
- 9a. Middle segment of leg 3 endopod with one inner seta *intermedius* Kabata, 1992
 - b. Middle segment of leg 3 endopod with two inner setae. 10
- 10a. Middle segment of leg 1 exopod without inner seta *monodi* Brian, 1927
 - b. Middle segment of leg 1 exopod with one inner seta 11
- 11a. Antenna with an inflated membrane between first and second segments, its claw and shaft (third segment) bearing protuberance on inner margin *turgidus* Fraser, 1920

- b. Antenna without such inflated membrane or protuberance
 *polynemi* Redkar, Rangnekar & Murti, 1951
- 12a. Antenna with an inflated membrane between first and second segments, its claw bearing two protuberances on inner margin *labracis* Krøyer, 1864
- b. Antenna without such inflated membrane or protuberance 13
- 13a. Armature on terminal segment of leg 1 endopod II, 4 14
- b. Armature on same segment of same leg I, 5 *mugilis* Vogt, 1877
- c. Armature on same segment of same leg I, 4 *longipalpus* Wilson, 1913
- 14a. Armature on terminal segment of exopod on legs 2 and 3 I, 6 15
- b. Armature on same segment of same leg rami 6 17
- 15a. Middle segment of leg 1 exopod without outer spine 16
- b. Same segment of same leg with outer spine
 *ceylonensis* Fernando & Hanek, 1973
- 16a. Antennule 6-segmented; eggs in egg sac multiseriate *ogawai* Kabata, 1992
- b. Antennule 5-segmented; eggs in egg sac uniseriate
 *uniseriatus* Ho, Jarayajan & Radhakrishnan, 1992
- 17a. Terminal segment of endopod on legs 2 and 3 armed with one short and four long setae 18
- b. Same segment of same leg rami with five long setae
 *borneoensis* Yamaguti, 1954
- 18a. Antennule 5-segmented 19
- b. Antennule 6-segmented 20
- 19a. Caudal ramus long, ratio of length to width greater than 2; leg 1 intercoxal plate heavily armed with coarse spinules *spinilaminatus* Kabata, 1992
- b. Caudal ramus short, ratio of length to width less than 1.5; leg 1 intercoxal plate without coarse spinules
 *rostralis* Ho, Jarayajan & Radhakrishnan, 1992
- 20a. Intercoxal plate of leg 1 with coarse denticles on posterior margin; protopods of legs 1-4 bearing patches of spinules *australiensis* Roubal, 1981
- b. Intercoxal plate of leg 1 without den-

titles; protopods of legs 1-4 without patches of spinules *lizae* Krøyer, 1863

Literature Cited

- Amado, M. A. P. da M., J.-S. Ho, & C. E. F. da Rocha. 1995. Phylogeny and biogeography of the Ergasilidae (Copepoda, Poecilostomatoida), with reconsideration of the taxonomic status of the Vaigamidae.—Contributions to Zoology 65: 233-243.
- Ben Hassine, O. K. 1983. Les copépodes de poissons Mugilidae en Méditerranée occidentale (Côtes Françaises et Tunisiennes), Morphologie bioécologie, cycles évolutifs.—Unpublished Doctorate Dissertation, Université de Sciences et Techniques du Languedoc, 425 pp.
- Ben Hassine, O. K., & A. Raibaut. 1981. Réalisation expérimentale du cycle évolutif de *Ergasilus lizae* Krøyer, 1863, Copépode parasite de poissons Mugilidés. Premiers résultats de l'infestation.—Archives de l'Institut Pasteur de Tunis 58(3/4):423-430.
- Bere, R. 1936. Parasitic copepods from Gulf of Mexico fish.—American Midland Naturalists 17: 577-625.
- Brian, A. 1927. Crustacea II. Copepoda parasitica. (in Monod Th.: Contribution à l'étude de la faune du Cameroun. I. Partie).—Faune Colonies Françaises 1:571-587.
- Byrnes, T. 1986. Some ergasilids (Copepoda) parasitic on four species of Australian bream, *Acanthopagrus* spp.—Australian Journal of Marine and Freshwater Research 37:81-93.
- Cressey, R. F., & B. B. Collette. 1970. Copepods and needlefishes: a study in host-parasite relationships.—Fishery Bulletin 68:347-432.
- Do, T. T. 1981. Parasitic Copepoda *Diergasilus kasaharai* gen. et sp. nov. from the striped mullet *Mugil cephalus*.—Bulletin of the Japanese Society of Scientific Fisheries 47:735-740.
- Fraser, C. M. 1920. Copepods parasitic on fish from the Vancouver Island region.—The Transactions of the Royal Society of Canada, series III 13: 45-67.
- Hanan, D. A. 1976. A new species of cyclopoid, parasitic on shiner surfperch, *Cymatogaster aggregata* Gibbons, in Anaheim Bay and Huntington Harbor, California, with notes on *Bomolochus cuneatus* Fraser and *Ergasilus lizae* Krøyer.—Bulletin of the Southern California Academy of Science 75:22-28.
- Ho, J.-S. 1991. Phylogeny of Poecilostomatoida: a major order of symbiotic copepods.—Bulletin of the Plankton Society of Japan, Special Volume 25-48.
- , P. Jarayajan, & S. Radhakrishnan. 1992. Copepods of the family Ergasilidae (Poecilosto-

- matoida) parasitic on coastal fishes of Kerala, India.—*Journal of Natural History* 26:1227–1241.
- Hogans, W. E. 1989. Mortality of cultured Atlantic salmon, *Salmo salar* L., caused by an infection of *Ergasilus labracis* (Copepoda: Poecilostomatoida) in the lower Saint John River, New Brunswick, Canada.—*Journal of Fish Disease* 12:529–531.
- Kabata, Z. 1986. Type specimens of *Ergasilus funduli* Krøyer, 1863 (Crustacea: Copepoda) re-examined.—*Steenstrupia* 12(9):153–156.
- . 1988. Part II—Crustacea, Copepoda and Branchiura. in L. Margolis & Z. Kabata, ed., *Guide to the Parasites of Fishes of Canada*.—Canadian Special Publication of Fisheries and Aquatic Sciences 101:127 pp.
- . 1992. Copepoda parasitic on Australian fishes, XV. Family Ergasilidae (Poecilostomatoida).—*Journal of Natural History* 26:47–66.
- Leong, T.-S., & S.-Y. Wong. 1988. A comparative study of the parasite fauna of wild and cultured grouper (*Epinephelus malabaricus* Bloch et Schneider) in Malaysia.—*Aquaculture* 68:203–207.
- Malta, J. C. O. 1993. *Miracetyma etimaruya* gen. et sp. n. (Copepoda, Poecilostomatoida, Ergasilidae) from freshwater fishes of the Brazilian Amazon.—*Acta Amazonica* 23:49–57.
- . 1994. *Pindapixara tarira* gen. et sp. n. (Copepoda: Ergasilidae) das branquias de *Hoplias malabaricus* (Bloch, 1794) (Characiformes: Erythrinidae) da Amazonia Brasileira.—*Acta Amazonica* 24:135–144.
- Margolis, L., & J. R. Arthur. 1979. Synopsis of the parasites of fishes of Canada.—*Bulletin of the Fisheries Research Board of Canada* 199:1–269.
- Markewitsch, A. 1933. Descrizione di due specie nuove di *Ergasilus* provenienti dalla Russia (U.R.S.S.).—*Memorie Societa Entomologica Italiana* 12(2):129–141.
- . 1940. New representatives of Copepoda parasitica of the family Ergasilidae.—*Pratsi Naukdoslid Institutu Biologiyi KDU* 4:107–121.
- Nakajima, K., & S. Egusa. 1973. Parasitic copepod, *Pseudoergasilus zacconis* Yamaguti, found on the gills of cultured Ayu, *Plecoglossus altivelis*—I. Morphology.—*Fish Pathology* 8:106–110.
- Nigrelli, R. F. 1950. Lymphocystis disease and ergasilid parasites in fishes.—*Journal of Parasitology* 36:36.
- Paperna, I. 1975. Parasites and diseases of the grey mullet (Mugilidae) with special reference to the seas of the Near East—*Aquaculture* 5:65–80.
- Redkar, M., P. T. Rangnekar, & N. N. Marti. 1952. *Ergasilus polynemi* sp. nov. (Copepoda), parasitic on the fish *Polynemus tetradactylus* Shaw.—*Journal of the Zoological Society of India* 3:223–227.
- Roberts, L. S. 1970. *Ergasilus* (Copepoda: Cyclopoida): revision and key to species in North America.—*Transaction of the American Microscopical Society* 89:134–161.
- Roubal, F. R. 1981. The taxonomy and site specificity of the metazoan ectoparasites on the black bream, *Acanthopagrus australis* (Günther), in Northern New South Wales.—*Australian Journal of Zoology, Supplemental Series* 84:1–100.
- Wijeyaratne, M. J. S., & R. S. Gunawardene. 1988. Chemotherapy of ectoparasite, *Ergasilus ceylonensis* of Asian cichlid, *Etroplus suratensis*.—*Journal of Applied Ichthyology* 4:97–100.
- Wilson, C. B. 1913. Crustacean parasites of West Indian fishes and land crabs, with descriptions of new genera and species.—*Proceedings of the U. S. National Museum* 44:189–277.
- Yamaguti, S. 1939. Parasitic copepods from fishes of Japan. Part 4. Cyclopoida, II.—*Volumen Jubilare Pro Prof. Sadao Yoshida* 2:392–415.